

polyester crown forms

matrices

temporary crowns

flexible scaler

occlusal matrices

matrix bands

wedges

endolucet



**AnGer G&A**



# DENTAL RESTORATION PRODUCTS

CATALOGUE

**AnGer G&A** Dental Manufacturing Enterprise was established in 1991 with an aim to deliver dental restoration products into the market. For twenty four years we have succeeded in making dental products of high quality and competitive prices, products that are, moreover, provided in a wide variety of types and sizes. Simply, we offer a solution thanks to which dentists' work is quick and easy.

All the above mentioned properties resulted in wide popularity of **AnGer** products. As an exporter we have established stable position in the market of dental restoration products and mutually beneficial business relations with our partners in over 50 countries all over the world.

We invite you to test our products, to familiarize with their advantages and join professionals for whom time, quality and cost effectiveness are important.

Our certificates:

## 1. Certificates of Free Sale

No. 118/12, 119/12, 120/12, 121/12

## 2. All our products have the **CE marking**, according to the European Council Directive 93/42/EEC

Urząd Rejestracji  
Produktów Leczniczych, Wyrobów Medycznych i Produktów Biobójczych  
ul. Żabkowska 41, 03-730 Warszawa, tel. +48 22 492 11 00, fax +48 22 492 11 09  
NIP: 521 32 14 182 REGON 013 24 96 01

Warsaw, 2012-04-04

**CERTIFICATE OF FREE SALE No. 121/12**

In reference to application for a free sale certificate made by the  
**Przedsiębiorstwo Produkcyjne AnGer G&A Gerard Wójcicki**  
(applicant for certificate of free sale)

It is concluded that the medical device listed below:

Name of the medical device	Type
Matrices for teeth reconstruction (crowns, forms, profiles)	Polyester crown forms, shaped matrices, self-licking matrices, flat matrices, cervical matrices, polyester cones

manufactured by:  
**Przedsiębiorstwo Produkcyjne AnGer G&A Gerard Wójcicki**  
Szczeglice ul. Długa 64A, 32-083 Balice  
(identification of the manufacturer)

on the basis of the statement of the manufacturer the aforementioned medical device is CE marked at the sole responsibility of the manufacturer. The medical device CE marked in conformity with the act of 20<sup>th</sup> May 2010 on medical devices (Official Journal of Laws, No. 107, item 679 as amended) which implements Directive 93/42/EEC can be placed on the market and put into service in the territory of Republic of Poland. Export of the above product is not prohibited.

President of the Office  
Jacek Krawiec

Certificate of Free Sale is issued pursuant to the provisions of the act of 20<sup>th</sup> May 2010 (Official Journal of Laws, No. 107, item 679 as amended).

You can meet us at various dental fairs & exhibitions.

Please visit our website [www.anger.com.pl](http://www.anger.com.pl) to find out where our next exhibition takes place.

## TABLE OF CONTENTS

Flexible Scalers	4
Polyester Crown Forms	5
How to read a product code	6
Sets	7
Lower Incisors	8
Incisors	10
Laterals	12
Canines	14
Premolars	16
Molars	18
Anteriors	20
Posteriors	21
Polyester Cones	22
Occlusal Matrices	23
Endolucet	24
Temporary Crowns	26
Lower Incisors	28
Incisors	29
Laterals	30
Canines	31
Premolars	32
Molars	33
Anteriors&Posteriors	34
Flat Matrices, Cervical Matrices	35
Self-Locking Matrices	36
Shaped Matrices	38
Polyester Bands	40
Metal Matrix Bands	41
Light-Conductive Wedges	42
Soft Elastic Wedges	43
Useful Dental Gadgets	44

## NEW!

We recommend our new product - REMOVELLE - flexible scalers for removing tartar and plaque from the interdental spaces.

**Art. 1275 Stainless Steel Flexible Scaler** - perforated metal tape. A box includes 2 meters of 5mm wide and 0.045mm thick tape. This product may be sterilised by any method.



Cut a 10cm strip by scissors. Hold the strip in two places between thumbs and forefingers leaving about 1cm gap and place the strip into the interdental space. Clean the surface between teeth with rough side of the strip by 3-4 stroking motions.

**Art. 1176 Elastic Scaler** made of perforated polyester foil. A box includes 4 meters of 0.050mm thick and 6mm wide foil. Being more delicate to the tooth surface, the polyester scaler may be used by the patient him/herself as an alternative to a dental floss.



Slide out 10cm of tape and cut on the serrated blade. Hold the strip in two places between thumbs and forefingers leaving about 1cm gap and place the strip into the interdental space. Clean the surface between teeth with rough side of the strip by 3-4 stroking motions.

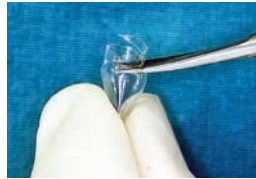
Absolutely necessary whenever aesthetics plays the main role. Application of AnGer crowns guarantees perfectly smooth surface, and such surface lowers the risk of tartar and plaque occurrence.

1



When tooth is prepared for restoration, carefully choose the crown size. Choosing the right size assures natural look of reconstructed tooth.

2



Adjust length of the crown by trimming the cervical end. It should overlap the tooth at least 2mm above the defect. This provides smooth joining of tooth and filling.

3



To eliminate formation of air bubbles in the filling, perforate all corners of the crown before putting the filling in.

4



Place filling in the crown, so that it gathers at the very spot of the largest defect.

5



Once the crown is put on the tooth, remove excess of the filling that came out of the crown through perforation. Now you can start polymerization.

6



When polymerization process is completed, cut the crown form delicately – just make a scratch on the crown surface. Now remove the crown form from reconstructed tooth.

AnGer crown forms are a perfect solution when applying the layer reconstruction method.

1



The front part of AnGer crown can be easily cut out to enable material application layer by layer which gives perfectly natural look of reconstructed tooth.

2



With secured lingual surface and proximal surfaces and incisal ridge of a tooth, you can apply several layers. That helps to achieve natural shape of a tooth and eliminates “dripping” of used material. Colour-coded soft wedges applied.

What makes AnGer crown forms so special? Flexibility, strength, and well designed cervical part. No other crown form will endure what is presented on the two above pictures.

AnGer crown forms have their catalogue codes that begin with a digit referring to a **teeth group**:

- 1** - Set of ALL GROUPS of teeth
- 2** - Lower Incisors
- 3** - Incisors
- 4** - Laterals
- 5** - Canines
- 6** - Premolars
- 7** - Molars
- 8** - Set of ANTERIORS
- 9** - Set of POSTERIORS

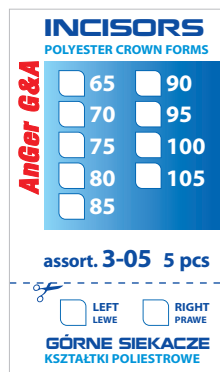
The second digit after the teeth group code stands for the **number of pieces** in a box. AnGer G&A offers boxes that hold **5, 10, 32, 80, 108**, or **144** pieces of crown forms (e.g. 3-32 = set of 32 pcs of Incisors).

Next digit stands for the **width** of a crown form expressed in **1/10mm** for all the teeth groups (e.g. 65 means a crown form 6.5mm wide) **except Lower Incisors** that have their **length** in this position.

Finally, **only for 5-pcs boxes**, the last symbol is **L** or **R** which stands for the **left or right side**, respectively.

## Example:

the code **3-05-80R** means that we are looking at a box that includes Incisors, 5 pcs, with the width of 8.0mm, designed for the right side; and **2-10-110** - 10 pcs of Lower Incisors with the length of 11mm.



## Sets

**144 pcs** **ALL GROUPS**  
**both sides, all sizes**

Group	Size	LEFT	RIGHT
Incisors	all	20 pcs	20 pcs
Lower Incisors	all	8 pcs	8 pcs
Laterals	all	8 pcs	8 pcs
Canines	all	12 pcs	12 pcs
Premolars	all	10 pcs	10 pcs
Molars	all	14 pcs	14 pcs

**Art. 1-144**



**80 pcs** **ALL GROUPS**  
**both sides, assorted sizes**

Group	Size	LEFT	RIGHT
Incisors	mix	16 pcs	16 pcs
Lower Incisors	all	4 pcs	4 pcs
Laterals	all	4 pcs	4 pcs
Canines	mix	8 pcs	8 pcs
Premolars	mix	4 pcs	4 pcs
Molars	mix	4 pcs	4 pcs

**Art. 1-80**



**32 pcs** **ALL GROUPS**  
**both sides, assorted sizes**

Group	Size	LEFT	RIGHT
Incisors	mix	5 pcs	5 pcs
Lower Incisors	mix	2 pcs	2 pcs
Laterals	mix	2 pcs	2 pcs
Canines	mix	2 pcs	2 pcs
Premolars	mix	3 pcs	3 pcs
Molars	mix	2 pcs	2 pcs

**Art. 1-32**



**Art. 1-STARTER** includes 187 pieces of our products - it gives you the possibility to learn how useful AnGer's products are. This special kit is a perfect set for beginning of the work.

### Polyester crown forms -

1 pc for each side from any size for all the teeth groups

### Elastic interdental wedges -

10 pcs from each size (L, M, S, XS)

### Light-conductive interdental wedges -

10 pcs from each size (L, M, S, XS)

### Self-locking matrices -

2 pcs from each size and foil thickness (A - 0.075mm and B - 0.050mm).

### Shaped matrices -

1 pc from each size and foil thickness (A - 0.075mm and B - 0.050mm)

### Cervical matrices -

8 pcs + holder with the diameter of 6mm

### Cones for root-core restorations -

1 pc from each size



## Lower Incisors

**5 pcs** of Lower Incisors - **LEFT**  
one side, one size

Art. No.	Size	Length
2-05-100L	100	10mm
2-05-110L	110	11mm
2-05-120L	120	12mm
2-05-130L	130	13mm

**5 pcs** of Lower Incisors - **RIGHT**  
one side, one size

Art. No.	Size	Length
2-05-100R	100	10mm
2-05-110R	110	11mm
2-05-120R	120	12mm
2-05-130R	130	13mm

**10 pcs** of Lower Incisors  
both sides, one size

Art. No.	LEFT	RIGHT	Size	Length
2-10-100	5 pcs	5 pcs	100	10mm
2-10-110	5 pcs	5 pcs	110	11mm
2-10-120	5 pcs	5 pcs	120	12mm
2-10-130	5 pcs	5 pcs	130	13mm





## Lower Incisors

**32 pcs** of Lower Incisors  
both sides, all sizes

	LEFT	RIGHT	Size	Length
Art. 2-32	4 pcs	4 pcs	100	10mm
	4 pcs	4 pcs	110	11mm
	4 pcs	4 pcs	120	12mm
	4 pcs	4 pcs	130	13mm



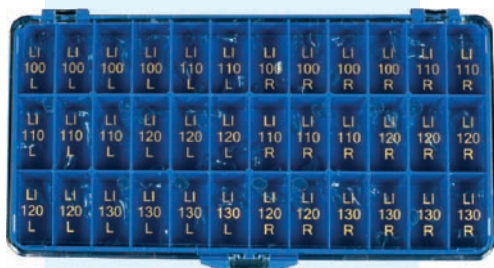
**80 pcs** of Lower Incisors  
both sides, all sizes

	LEFT	RIGHT	Size	Length
Art. 2-80			100	10mm
			110	11mm
	40 pcs	40 pcs	120	12mm
			130	13mm



**108 pcs** of Lower Incisors  
both sides, all sizes

	LEFT	RIGHT	Size	Length
Art. 2-108	12 pcs	12 pcs	100	10mm
	15 pcs	15 pcs	110	11mm
	15 pcs	15 pcs	120	12mm
	12 pcs	12 pcs	130	13mm



## Incisors

**5  
pcs**

**of Incisors - LEFT**  
**one side, one size**

Art. No	Size	Width
3-05-65L	65	6.5mm
3-05-70L	70	7.0mm
3-05-75L	75	7.5mm
3-05-80L	80	8.0mm
3-05-85L	85	8.5mm
3-05-90L	90	9.0mm
3-05-95L	95	9.5mm
3-05-100L	100	10.0mm
3-05-105L	105	10.5mm

**5  
pcs**

**of Incisors - RIGHT**  
**one side, one size**

Art. No	Size	Width
3-05-65R	65	6.5mm
3-05-70R	70	7.0mm
3-05-75R	75	7.5mm
3-05-80R	80	8.0mm
3-05-85R	85	8.5mm
3-05-90R	90	9.0mm
3-05-95R	95	9.5mm
3-05-100R	100	10.0mm
3-05-105R	105	10.5mm



**10  
pcs**

**of Incisors**  
**both sides, one size**

Art. No	LEFT	RIGHT	Size	Width
3-10-65	5 pcs	5 pcs	65	6.5mm
3-10-70	5 pcs	5 pcs	70	7.0mm
3-10-75	5 pcs	5 pcs	75	7.5mm
3-10-80	5 pcs	5 pcs	80	8.0mm
3-10-85	5 pcs	5 pcs	85	8.5mm
3-10-90	5 pcs	5 pcs	90	9.0mm
3-10-95	5 pcs	5 pcs	95	9.5mm
3-10-100	5 pcs	5 pcs	100	10.0mm
3-10-105	5 pcs	5 pcs	105	10.5mm



## Incisors

**32  
pcs**

**of Incisors  
both sides, all sizes**

**Art. 3-32**

LEFT	RIGHT	Size	Width
1 pc	1 pc	65	6.5mm
1 pc	1 pc	70	7.0mm
2 pcs	2 pcs	75	7.5mm
2 pcs	2 pcs	80	8.0mm
2 pcs	2 pcs	85	8.5mm
2 pcs	2 pcs	90	9.0mm
2 pcs	2 pcs	95	9.5mm
2 pcs	2 pcs	100	10.0mm
2 pcs	2 pcs	105	10.5mm



**80  
pcs**

**of Incisors  
both sides, all sizes**

**Art. 3-80**

LEFT	RIGHT	Size	Width
40 pcs	40 pcs	65	6.5mm
		70	7.0mm
		75	7.5mm
		80	8.0mm
		85	8.5mm
		90	9.0mm
		95	9.5mm
		100	10.0mm
		105	10.5mm



**108  
pcs**

**of Incisors  
both sides, all sizes**

**Art. 3-108**

LEFT	RIGHT	Size
6 pcs	6 pcs	65
6 pcs	6 pcs	70
6 pcs	6 pcs	75
6 pcs	6 pcs	80
6 pcs	6 pcs	85
6 pcs	6 pcs	90
6 pcs	6 pcs	95
6 pcs	6 pcs	100
6 pcs	6 pcs	105



## Laterals

**5  
pcs**

**of Laterals - LEFT**  
**one side, one size**

Art. No.	Size	Width
4-05-50L	50	5.0mm
4-05-55L	55	5.5mm
4-05-60L	60	6.0mm
4-05-65L	65	6.5mm

**5  
pcs**

**of Laterals - RIGHT**  
**one side, one size**

Art. No.	Size	Width
4-05-50R	50	5.0mm
4-05-55R	55	5.5mm
4-05-60R	60	6.0mm
4-05-65R	65	6.5mm

**10  
pcs**

**of Laterals**  
**both sides, one size**

Art. No.	LEFT	RIGHT	Size	Width
4-10-50	5 pcs	5 pcs	50	5.0mm
4-10-55	5 pcs	5 pcs	55	5.5mm
4-10-60	5 pcs	5 pcs	60	6.0mm
4-10-65	5 pcs	5 pcs	65	6.5mm



## Laterals

**32  
pcs**

**of Laterals  
both sides, all sizes**

**Art. 4-32**

LEFT	RIGHT	Size	Width
4 pcs	4 pcs	50	5.0mm
4 pcs	4 pcs	55	5.5mm
4 pcs	4 pcs	60	6.0mm
4 pcs	4 pcs	65	6.5mm



**80  
pcs**

**of Laterals  
both sides, all sizes**

**Art. 4-80**

LEFT	RIGHT	Size	Width
		50	5.0mm
		55	5.5mm
40 pcs	40 pcs	60	6.0mm
		65	6.5mm



**108  
pcs**

**of Laterals  
both sides, all sizes**

**Art. 4-108**

LEFT	RIGHT	Size
12 pcs	12 pcs	50
15 pcs	15 pcs	55
15 pcs	15 pcs	60
12 pcs	12 pcs	65



## Canines

**5  
pcs**

**of Canines - LEFT**  
**one side, one size**

Art. No.	Size	Width
5-05-65L	65	6.5mm
5-05-75L	75	7.5mm
5-05-85L	85	8.5mm
5-05-95L	95	9.5mm
5-05-105L	105	10.5mm

**5  
pcs**

**of Canines - RIGHT**  
**one side, one size**

Art. No.	Size	Width
5-05-65R	65	6.5mm
5-05-75R	75	7.5mm
5-05-85R	85	8.5mm
5-05-95R	95	9.5mm
5-05-105R	105	10.5mm

**10  
pcs**

**of Canines**  
**both sides, one size**

Art. No.	LEFT	RIGHT	Size	Width
5-10-65	5 pcs	5 pcs	65	6.5mm
5-10-75	5 pcs	5 pcs	75	7.5mm
5-10-85	5 pcs	5 pcs	85	8.5mm
5-10-95	5 pcs	5 pcs	95	9.5mm
5-10-105	5 pcs	5 pcs	105	10.5mm





## Canines

**32 pcs** of Canines  
both sides, all sizes

Art. 5-32	LEFT	RIGHT	Size	Width
	2 pcs	2 pcs	65	6.5mm
	4 pcs	4 pcs	75	7.5mm
	4 pcs	4 pcs	85	8.5mm
	4 pcs	4 pcs	95	9.5mm
	2 pcs	2 pcs	105	10.5mm



**80 pcs** of Canines  
both sides, all sizes

Art. 5-80	LEFT	RIGHT	Size	Width
			65	6.5mm
			75	7.5mm
	40 pcs	40 pcs	85	8.5mm
			95	9.5mm
			105	10.5mm



**108 pcs** of Canines  
both sides, all sizes

Art. 5-108	LEFT	RIGHT	Size	Width
	9 pcs	9 pcs	65	6.5mm
	12 pcs	12 pcs	75	7.5mm
	12 pcs	12 pcs	85	8.5mm
	12 pcs	12 pcs	95	9.5mm
	9 pcs	9 pcs	105	10.5mm



## Premolars

**5  
pcs**

**of Premolars - LEFT**  
**one side, one size**

Art. No.	Size	Width
6-05-65L	65	6.5mm
6-05-70L	70	7.0mm
6-05-75L	75	7.5mm
6-05-80L	80	8.0mm
6-05-85L	85	8.5mm

**5  
pcs**

**of Premolars - RIGHT**  
**one side, one size**

Art. No.	Size	Width
6-05-65L	65	6.5mm
6-05-70L	70	7.0mm
6-05-75L	75	7.5mm
6-05-80L	80	8.0mm
6-05-85L	85	8.5mm

**10  
pcs**

**of Premolars**  
**both sides, one size**

Art. No.	LEFT	RIGHT	Size	Width
6-10-65	5pcs	5pcs	65	6.5mm
6-10-70	5pcs	5pcs	70	7.0mm
6-10-75	5pcs	5pcs	75	7.5mm
6-10-80	5pcs	5pcs	80	8.0mm
6-10-85	5pcs	5pcs	85	8.5mm





## Premolars

**32**  
**pcs** of Premolars  
both sides, all sizes

LEFT	RIGHT	Size	Width
2 pcs	2 pcs	65	6.5mm
4 pcs	4 pcs	70	7.0mm
4 pcs	4 pcs	75	7.5mm
4 pcs	4 pcs	80	8.0mm
2 pcs	2 pcs	85	8.5mm

**Art. 6-32**



**80**  
**pcs** of Premolars  
both sides, all sizes

LEFT	RIGHT	Size	Width
		65	6.5mm
		70	7.0mm
40 pcs	40 pcs	75	7.5mm
		80	8.0mm
		85	8.5mm

**Art. 6-80**



**108**  
**pcs** of Premolars  
both sides, all sizes

LEFT	RIGHT	Size	Width
9 pcs	9 pcs	65	6.5mm
12 pcs	12 pcs	70	7.0mm
12 pcs	12 pcs	75	7.5mm
12 pcs	12 pcs	80	8.0mm
9 pcs	9 pcs	85	8.5mm

**Art. 6-108**



## Molars

**5 pcs** of Molars - **LEFT**  
one side, one size

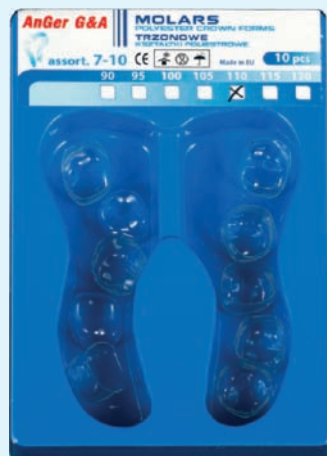
Art. No	Size	Width
7-05-90L	90	9.0mm
7-05-95L	95	9.5mm
7-05-100L	100	10.0mm
7-05-105L	105	10.5mm
7-05-110L	110	11.0mm
7-05-115L	115	11.5mm
7-05-120L	120	12.0mm

**5 pcs** of Molars - **RIGHT**  
one side, one size

Art. No	Size	Width
7-05-90R	90	9.0mm
7-05-95R	95	9.5mm
7-05-100R	100	10.0mm
7-05-105R	105	10.5mm
7-05-110R	110	11.0mm
7-05-115R	115	11.5mm
7-05-120R	120	12.0mm

**10 pcs** of Molars  
both sides, one size

Art. No	LEFT	RIGHT	Size	Width
7-10-90	5 pcs	5 pcs	90	9.0mm
7-10-95	5 pcs	5 pcs	95	9.5mm
7-10-100	5 pcs	5 pcs	100	10.0mm
7-10-105	5 pcs	5 pcs	105	10.5mm
7-10-110	5 pcs	5 pcs	110	11.0mm
7-10-115	5 pcs	5 pcs	115	11.5mm
7-10-120	5 pcs	5 pcs	120	12.0mm



## Molars

**32 pcs** of Molars both sides, all sizes

Art. 7-32

LEFT	RIGHT	Size	Width
2 pcs	2 pcs	90	9.0mm
2 pcs	2 pcs	95	9.5mm
2 pcs	2 pcs	100	10.0mm
2 pcs	2 pcs	105	10.5mm
4 pcs	4 pcs	110	11.0mm
2 pcs	2 pcs	115	11.5mm
2 pcs	2 pcs	120	12.0mm



**80 pcs** of Molars both sides, all sizes

Art. 7-80

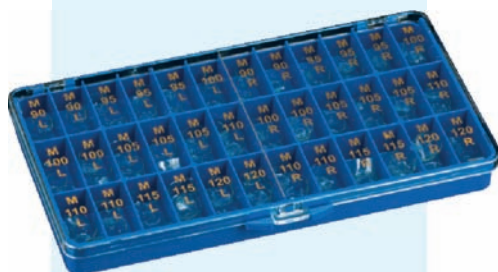
LEFT	RIGHT	Size	Width
		90	9.0mm
		95	9.5mm
		100	10.0mm
40 pcs	40 pcs	105	10.5mm
		110	11.0mm
		115	11.5mm
		120	12.0mm



**108 pcs** of Molars both sides, all sizes

Art. 7-108

LEFT	RIGHT	Size	Width
6 pcs	6 pcs	90	9.0mm
9 pcs	9 pcs	95	9.5mm
9 pcs	9 pcs	100	10.0mm
9 pcs	9 pcs	105	10.5mm
9 pcs	9 pcs	110	11.0mm
6 pcs	6 pcs	115	11.5mm
6 pcs	6 pcs	120	12.0mm



## Anteriors

**32 pcs** of Incisors, Lower Incisors, Laterals both sides, assorted sizes

Art. 8-32	GROUP	SIZE	LEFT	RIGHT
	Incisors	mix	8 pcs	8 pcs
	Lower Incisors	all	4 pcs	4 pcs
	Laterals	all	4 pcs	4 pcs



**80 pcs** of Incisors, Lower Incisors, Laterals, Canines both sides, assorted sizes

Art. 8-80	GROUP	SIZE	LEFT	RIGHT
	Incisors	mix	24 pcs	24 pcs
	Lower Incisors	all	4 pcs	4 pcs
	Laterals	all	4 pcs	4 pcs
	Canines	mix	8 pcs	8 pcs



**108 pcs** of Incisors, Lower Incisors, Laterals both sides, all sizes

Art. 8-108	GROUP	SIZE	LEFT	RIGHT
	Incisors	all	30 pcs	30 pcs
	Lower Incisors	all	12 pcs	12 pcs
	Laterals	all	12 pcs	12 pcs



## Posteriors

**32 pcs** of Canines, Premolars, Molars both sides, assorted sizes

**Art. 9-32**

GROUP	SIZE	LEFT	RIGHT
Canines	all	5 pcs	5 pcs
Premolars	all	5 pcs	5 pcs
Molars	mix	6 pcs	6 pcs



**80 pcs** of Premolars, Molars both sides, all sizes

**Art. 9-80**

GROUP	SIZE	LEFT	RIGHT
Premolars	all	24 pcs	24 pcs
Molars	all	16 pcs	16 pcs



**108 pcs** of Canines, Premolars, Molars both sides, all sizes

**Art. 9-108**

GROUP	SIZE	LEFT	RIGHT
Canines	all	15 pcs	15 pcs
Premolars	all	15 pcs	15 pcs
Molars	all	24 pcs	24 pcs



## Transparent Polyester Cones

1

When dealing with total lack of a tooth crown, before restoration begins, use AnGer transparent polyester cones for root-core restorations.

2

Once the screw needed for crown reconstruction is placed in the tooth root, choose the appropriate cone size. To eliminate formation of air bubbles in the filling, perforate top of the cone before putting the filling in.

3

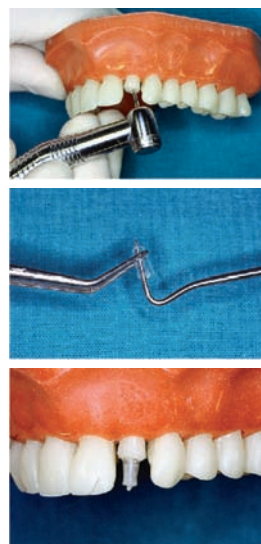
Fill the chosen cone with restorative material and top the screw.

For polyester cones the code **19-10-60** stands for:

**19** - catalogue code for polyester cones    **60** - max. diameter of the cone in 1/10mm - in this example 6mm  
**10** - a box containing 10pcs of cones



The top diameter of each cone is 2 mm smaller than the bottom diameter indicated in the code.



**10  
pcs**

### of Polyester Cones one size

Art. No.	Open bottom diameter	Top diam.	Size
19-10-40	max 4mm	2mm	40
19-10-60	max 6mm	4mm	60
19-10-70	max 7mm	5mm	70
19-10-80	max 8mm	6mm	80
19-10-100	max 10mm	8mm	100
19-10-120	max 12mm	10 mm	120



**36  
pcs**

### of Polyester Cones all sizes

Art. No.	Pcs	Size
19-36	6	40
	6	60
	6	70
	6	80
	6	100
	6	120





## NEW!

Occlusal matrices help to rebuild cusps in molars and premolars that may get damaged due to caries, wearing caused by jaws problems, as well as ageing. Made of polycarbonate, the occlusal matrices are strong, yet still possible to cut to adjust them to dentists particular needs. Due to their transparency, the matrices are great light conductors.

Occlusal matrices are offered in 10 sizes - 5 sizes for Molars and 5 sizes for Premolars.

**Art. 23-10-01** Molars no. 1 XL extra large

**Art. 23-10-02** Molars no. 2 L large

**Art. 23-10-03** Molars no. 3 M medium

**Art. 23-10-04** Molars no. 4 S small

**Art. 23-10-05** Molars no. 5 XS extra small

**Art. 23-60** – a **60pcs** set of occlusal matrices for Molars (5 sizes with 12 pcs)

**Art. 24-10-01** Premolars no. 1 XL extra large

**Art. 24-10-02** Premolars no. 2 L large

**Art. 24-10-03** Premolars no. 3 M medium

**Art. 24-10-04** Premolars no. 4 S small

**Art. 24-10-05** Premolars no. 5 XS extra small

**Art. 24-60** – a **60 pcs** set of occlusal matrices for Premolars (5 sizes with 12 pcs)

**Art. 25-60** – a **60 pcs** set of occlusal matrices - 30 Molars (5 sizes with 6 pcs)  
+ 30 Premolars (5 sizes with 6 pcs)



Prepare tooth for restoration. Fill in the cavity with filling material, apply the previously chosen matrix and harden the material. After the matrix has been removed it is necessary to repeat the hardening process.



## NEW!

Light-Conductive Root Filling Tamper ENDOLUCENT - multi-purpose tool useful in coronaradicular restorations. Consists of two parts: the cone which corresponds to the coronal part of a tooth, and the pin which corresponds to the root, respectively.

- Made of transparent polycarbonate - conducts the polymerization light inside the root canal
- Helpful in preparation of root inlay impressions
- Tampers the filling material
- May be used as a temporary root-core inlay under a temporary crown

Available in 5 sizes:

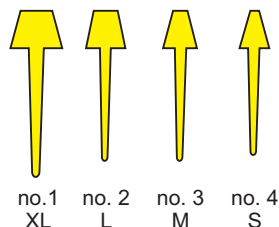
**Art. 26-10-01** Endolucen no. 1 XL

**Art. 26-10-02** Endolucen no. 2 L

**Art. 26-10-03** Endolucen no. 3 M

**Art. 26-10-04** Endolucen no. 4 S

**Art. 26-60** – a 60 pcs set of light-conductive root filling tamper (4 sizes with 15 pcs)



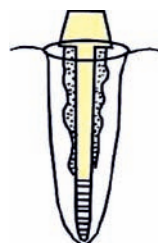
### Application of the cone in coronal fillings

Prepare a defect according to the general rules. Choose an appropriate size of Endolucen. Fill the defect with a filling material in, and tamper the material. Due to the fact that the cone has a round cross-section, the material will be pressed evenly to all the walls of a cavity. Exposure for about 20-30 sec. to start polymerization. Remove Endolucen by rotating it, and continue with polymerization.



### Application of the pin in root canal fillings

Prepare a root canal. Choose an appropriate size of Endolucen and flat the point of the pin to obtain even surface of the filling. Fill in the canal with e.g. glass ionomer cement mixed with one drop of bonding material. Insert the pin to push the filling material to the root canal walls and exposure for about 20-30 sec. Remove Endolucen by rotating it, and continue with polymerization.





## Application of the pin in perforated canals

Rinse the canal with appropriate preparation until the bleeding stops. Fill in the canal with  $\text{Ca(OH)}_2$  of pH= 12,5 for 2-3 weeks. During the next visit rinse, widen and fill in the tooth canal with e.g a sealant and gutta-percha pin to the perforation level (perforation canal). After 24 hours open the canal below the perforation canal and fill it, then insert the previously adjusted Endoluculent pin and actively press the cement to the walls, pressing it passively at the same time to the walls of the perforation canal. Polymerize as described in the paragraph above.

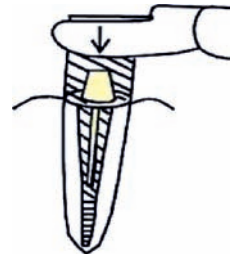


## Application of Endoluculent in making impressions

After preparation of a root canal adjust Endoluculent of a proper size. Insert a stiff impression material and Endoluculent into the canal. The cone makes it easier to pull out the impression, and the pin enables making of a precise model (apply gypsum by means of a brush round the impression).

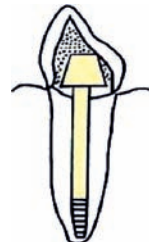
### In the Laboratory:

From the impression taken from the model cut out by a scalpel part that refers to a particular root. Insert it again into the model and shape with wax the coronal part of the inlay. Change the whole model for an inlay by a generally applied method. Impression material & Endoluculent & wax will be burned in a furnace.



## Application of Endoluculent as a temporary inlay under a temporary crown

After the impression for an inlay has been taken, Endoluculent (after adjusting by undercutting the pin and the cone) may be applied during endodontic treatment under a provisional crown.

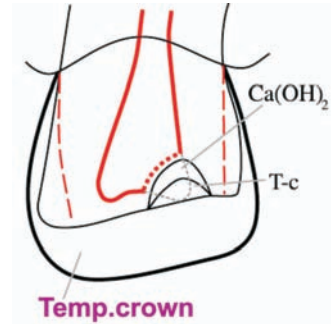


# NEW!

### POLYCARBONATE TEMPORARY CROWNS

Elastic, yet attrition-proof temporary crowns adapt easily to the gingival line, protect dentine against the influence of high and low temperatures, as well as protect prepared tooth until a complete crown restoration is made.

Polycarbonate temporary crowns may be used in making temporary (provisional) bridges.



1. Shape the cervical end of the crown by cutting it with scissors or a drill, so that the crown reaches only the gingival margin, and then polish the sharp edges. The crown may be individually adjusted to a tooth by means of a homopolymer after preparation and blocking dentinal tubules.
2. Fill the crown with temporary adhesive material in a light or grey shade to match the colour of the adjoining teeth.
3. Place the crown filled with temporary cement in required position and keep it until the material is hard - the excess material may be removed with any suitable instrument.
4. Final adjustment of the crown in occlusion: the crown replaces a tooth in the dental arch, protecting the dentine and dental pulp against the harmful influence of high and low temperatures, as well as against mechanical abrasion.

**NEW!**

# Art. 1-T-144

Set of temporary crowns for all the teeth groups - 144 pcs in a handy compartment box.

**144  
pcs**

**ALL GROUPS  
both sides, all sizes**

GROUP	SIZE	LEFT	RIGHT
Incisors	all	19 pcs	19 pcs
Lower Incisors	all	10 pcs	10 pcs
Laterals	all	10 pcs	10 pcs
Canines	all	15 pcs	15 pcs
Premolars	all	10 pcs	10 pcs
Molars	all	8 pcs	8 pcs



# TEMPORARY CROWNS

## Lower Incisors

The temporary crowns for Lower Incisors are universal, and may be applied to either side - left or right.

**5  
pcs**

**of Lower Incisors  
bilateral, one size**

Art.	No.Size	Quantity
2-T-05-501	501	5 pcs
2-T-05-502	502	5 pcs
2-T-05-503	503	5 pcs
2-T-05-504	504	5 pcs
2-T-05-505	505	5 pcs



**108  
pcs**

**of Lower Incisors  
bilateral, all sizes**

**Art. 2-T-108**

Size	Quantity
501	12 pcs
502	36 pcs
503	30 pcs
504	18 pcs
505	12 pcs



*If you prefer our crowns to be packed differently – JUST TELL US HOW TO ASSORT THEM!*

## Incisors

**5  
pcs**

**of Incisors - LEFT  
one side, one size**

Art. No.	Size	Quantity
3-T-05-121	121	5 pcs
3-T-05-122	122	5 pcs
3-T-05-123	123	5 pcs
3-T-05-124	124	5 pcs
3-T-05-125	125	5 pcs
3-T-05-126	126	5 pcs

**5  
pcs**

**of Incisors - RIGHT  
one side, one size**

Art. No.	Size	Quantity
3-T-05-111	111	5 pcs
3-T-05-112	112	5 pcs
3-T-05-113	113	5 pcs
3-T-05-114	114	5 pcs
3-T-05-115	115	5 pcs
3-T-05-116	116	5 pcs

**108  
pcs**

**of Incisors  
both sides, all sizes**

Size	Side	Quantity
121	left	9 pcs
122	left	9 pcs
123	left	9 pcs
124	left	9 pcs
125	left	9 pcs
126	left	9 pcs
111	right	9 pcs
112	right	9 pcs
113	right	9 pcs
114	right	9 pcs
115	right	9 pcs
116	right	9 pcs

**Art. 3-T-108**



## Laterals

**5  
pcs**

**of Laterals - LEFT**  
**one side, one size**

Art. No.	Size	Quantity
4-T-05-221	221	5 pcs
4-T-05-222	222	5 pcs
4-T-05-223	223	5 pcs
4-T-05-224	224	5 pcs
4-T-05-225	225	5 pcs

**5  
pcs**

**of Laterals - RIGHT**  
**one side, one size**

Art. No.	Size	Quantity
4-T-05-211	211	5 pcs
4-T-05-212	212	5 pcs
4-T-05-213	213	5 pcs
4-T-05-214	214	5 pcs
4-T-05-215	215	5 pcs

**108  
pcs**

**of Laterals**  
**both sides, all sizes**

**Art. 4-T-108**

Size	Side	Quantity
221	left	9 pcs
222	left	9 pcs
223	left	12 pcs
224	left	12 pcs
225	left	12 pcs
211	right	9 pcs
212	right	9 pcs
213	right	12 pcs
214	right	12 pcs
215	right	12 pcs



## Canines

**5  
pcs**

**of Canines - LEFT**  
**one side, one size**

Art. No.	Size	Quantity
5-T-05-321	321	5 pcs
5-T-05-322	322	5 pcs
5-T-05-323	323	5 pcs
5-T-05-324	324	5 pcs
5-T-05-325	325	5 pcs
5-T-05-326	326	5 pcs

**5  
pcs**

**of Canines - RIGHT**  
**one side, one size**

Art. No.	Size	Quantity
5-T-05-311	311	5 pcs
5-T-05-312	312	5 pce
5-T-05-313	313	5 pcs
5-T-05-314	314	5 pcs
5-T-05-315	315	5 pcs
5-T-05-316	316	5 pcs

**108  
pcs**

**of Canines**  
**both sides, all sizes**

Size	Side	Quantity
321	left	6 pcs
322	left	9 pcs
323	left	12 pcs
324	left	12 pcs
325	left	9 pcs
326	left	6 pcs
311	right	6 pcs
312	right	9 pcs
313	right	12 pcs
314	right	12 pcs
315	right	9 pcs
316	right	6 pcs

**Art. 5-T-108**





## Premolars

The temporary crowns for Premolars are universal, and may be applied to either side - left or right.

**5  
pcs**

**of Premolars  
bilateral, one size**

Art. No.	Size	Quantity
6-T-05-401	401	5 pcs
6-T-05-402	402	5 pcs
6-T-05-403	403	5 pcs
6-T-05-404	404	5 pcs
6-T-05-405	405	5 pcs



**108  
pcs**

**of Premolars  
bilateral, all sizes**

**Art. 6-T-108**

Size	Quantity
401	30 pcs
402	30 pcs
403	24 pcs
404	12 pcs
405	12 pcs





## Molars

**5  
pcs**

**of Molars - LEFT  
one side, one size**

Art. No.	Size	Quantity
7-T-05-621	621	5 pcs
7-T-05-622	622	5 pcs
7-T-05-623	623	5 pcs
7-T-05-624	624	5 pcs
7-T-05-625	625	5 pcs

**5  
pcs**

**of Molars - RIGHT  
one side, one size**

Art. No.	Size	Quantity
7-T-05-611	611	5 pcs
7-T-05-612	612	5 pcs
7-T-05-613	613	5 pcs
7-T-05-614	614	5 pcs
7-T-05-615	615	5 pcs

**108  
pcs**

**of Molars  
both sides, all sizes**

**Art. 7-T-108**

Size	Side	Quantity
621	left	12 pcs
622	left	16 pcs
623	left	12 pcs
624	left	8 pcs
625	left	6 pcs
611	right	12 pcs
612	right	16 pcs
613	right	12 pcs
614	right	8 pcs
615	right	6 pcs



## Anteriors & Posteriors

**108 pcs** of Incisors, Lower Incisors, Laterals both sides, all sizes

<b>Art. 8-T-108</b>	Group	Size	LEFT	RIGHT
	Incisors	all	18 pcs	18 pcs
	Lower Incisors	all	18 pcs	18 pcs
	Laterals	all	18 pcs	18 pcs



**108 pcs** of Canines, Premolars, Molars both sides, all sizes

<b>Art. 9-T-108</b>	Group	Size	LEFT	RIGHT
	Canines	all	21 pcs	21 pcs
	Premolars	all	21 pcs	21 pcs
	Molars	all	12 pcs	12 pcs



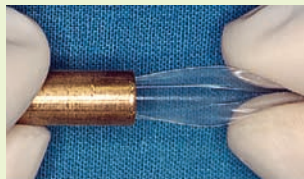
## Cervical Polyester Matrices

1



When dealing with Class V cervical defect, it is important to assure smoothness of filling surface. AnGer cervical matrix makes it possible to achieve in very easy way and short time.

2



Cervical matrix is a polyester strip with two endings: a wide one and a narrow one. Delicately squeeze the flat lateral margins, so that the strip turns into a tube, and slide it into supplied holder.

3



Pull out either of the ends, depending on the tooth size. Insert the chosen end – wider or narrower – under the gum and gently press it to the tooth surface. Polymerize the filling through the matrix. Smooth surface achieved in such way lowers the risk of tartar and plaque and prevents troublesome gum irritations.



**Assortment No. 18** contains a small holder and 50 pcs of cervical polyester matrices.

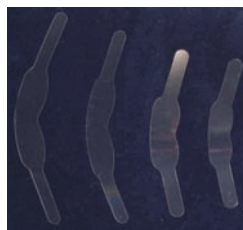
**Art. 18-Refill** = 50 pcs of matrices without holder

**Art. 18-T-4** = holder for Lower Incisors, inside diameter 4mm

**Art. 18-T-6** = standard holder, inside diameter 6mm

**Art. 18-T-7** = holder for bigger teeth, inside diameter 7mm

**Flat Polyester Matrices designed for small Class II defects in Premolars and Molars.**



**50 pcs**

**of Flat Matrices  
Foil A - 0.075 mm**

Art. No.	Group	Size
1101 A	Molar	L
1102 A	Molar	M
1103 A	Premolar	S
1104 A	Premolar	XS

**50 pcs**

**of Flat Matrices  
Foil B - 0.050 mm**

Art. No.	Group	Size
1101 B	Molar	L
1102 B	Molar	M
1103 B	Premolar	S
1104 B	Premolar	XS

Use the retainer exactly the same way as with shaped polyester matrices.

Assortment 1101 A contains 50 pcs of Molar flat matrices standard size, 0.075mm thick.



For Class II restorations of Premolars and Molars it is best to use AnGer Self-Locking Polyester Matrices. As there is no need of employing any additional tools or instruments, such as heavy metal holder (retainer) necessary for the other types of matrices, AnGer products guarantee comfort for both - dentists and patients. Moreover, the matrices are very easy to use.

## Self-Locking Matrices

**4** sizes  
better choice!

**1**



Once a tooth is ready for filling, put polyester matrix onto it. Slide the matrix on – brim with the two curves towards the gum.

**2**



Tighten the matrix by pressing the self-locking metal ring starting at the very tip of the metal plate- flat section.

**3**



When the metal ring is locked, bend the metal plate aside. That assures good work conditions.

**4**



Secure the polyester matrix using one of AnGer light-conductive interdental wedges.

**5**



When tooth is ready - start filling the defect with chosen material and harden it by applying polymerization light.

To satisfy individual needs of our clients, we offer matrices of two thicknesses:

**A – 0.075mm** and **B – 0.050mm** thick – choose foil that suits your work best!



## Self-Locking Matrices

**16 pcs**

of Self-Locking Matrices  
Foil A - 0.075 mm

Art. No.	Group	Size
1001 A	Molar	L
1002 A	Molar	M
1003 A	Premolar	S
1004 A	Premolar	XS

**16 pcs**

of Self-Locking Matrices  
Foil B - 0.050 mm

Art. No.	Group	Size
1001 B	Molar	L
1002 B	Molar	M
1003 B	Premolar	S
1004 B	Premolar	XS

**40 pcs**

of Self-Locking Matrices  
Foil A - 0.075 mm all types & sizes

Art. No.	Group	Pcs	Size
12 A	Molar	5	L
	Molar	15	M
	Premolar	15	S
	Premolar	5	XS

**40 pcs**

of Self-Locking Matrices  
Foil A - 0.075 mm Molars, all sizes

Art. No.	Group	Pcs	Size
13 A	Molar	20	L
	Molar	20	M

**40 pcs**

of Self-Locking Matrices  
Foil A - 0.075 mm Premolars, all sizes

Art. No.	Group	Pcs	Size
14 A	Premolar	20	S
	Premolar	20	XS



**40 pcs**

of Self-Locking Matrices  
Foil B - 0.050 mm all types & sizes

Art. No.	Group	Pcs	Size
12 B	Molar	5	L
	Molar	15	M
	Premolar	15	S
	Premolar	5	XS

**40 pcs**

of Self-Locking Matrices  
Foil B - 0.050 mm Molars, all sizes

Art. No.	Group	Pcs	Size
13 B	Molar	20	L
	Molar	20	M

**40 pcs**

of Self-Locking Matrices  
Foil B - 0.050 mm Premolars, all sizes

Art. No.	Group	Pcs	Size
14 B	Premolar	20	S
	Premolar	20	XS

Assortments No. 12, 13 and 14 are available in boxes like the one presented.



## Shaped Polyester Matrices

If you are used to work with retainers (tensors) for Premolar and Molar Class II restorations, it is best to use AnGer Shaped Polyester Matrices. The matrices provide appropriate firm hold of a tooth without causing unnecessary deformations.

1



The tooth is ready for filling.

2



Pick the appropriate size of matrix and fasten it in a retainer (tensor). Place the shaped polyester matrix round the tooth, then slide the matrix on – brim with two curves towards the gum.

3



If the interdental space is too tight and there is a problem with placing the matrix over the tooth, AnGer interdental wedges are the best solution. Insert the wedges between the teeth to widen the space gently and make it possible to move the matrix around the tooth and fit it perfectly to the tooth shape.

4



Remove the wedge and slide the matrix down the tooth to place it in the appropriate position. Next insert the wedges once again - two wedges give a better result - this time to press the matrix to the tooth.

5



A correctly inserted matrix, secured with two transparent wedges makes the work easy and assures high quality and precision of reconstruction done. During polymerization the wedges allow for simultaneous illumination of the whole filling surface.

To satisfy individual needs of our clients, we offer matrices of two thicknesses:

**A – 0.075mm and B – 0.050mm thick** – choose foil that suits your work best!



## Shaped Polyester Matrices

**16 pcs**

of Shaped Matrices  
Foil A - 0.075 mm

Art. No.	Group	Size
1111 A	Molar	L
1112 A	Molar	M
1113 A	Premolar	S
1114 A	Premolar	XS

**16 pcs**

of Shaped Matrices  
Foil B - 0.050 mm

Art. No.	Group	Size
1111 B	Molar	L
1112 B	Molar	M
1113 B	Premolar	S
1114 B	Premolar	XS

**40 pcs**

of Shaped Matrices  
Foil A - 0.075 mm all types & sizes

Art. No.	Group	Pcs	Size
15 A	Molar	5	L
	Molar	15	M
	Premolar	15	S
	Premolar	5	XS

**40 pcs**

of Shaped Matrices  
Foil B - 0.050 mm all types & sizes

Art. No.	Group	Pcs	Size
15 B	Molar	5	L
	Molar	15	M
	Premolar	15	S
	Premolar	5	XS

**40 pcs**

of Shaped Matrices  
Foil A - 0.075 mm Molars, all sizes

Art. No.	Group	Pcs	Size
16 A	Molar	20	L
	Molar	20	M

**40 pcs**

of Shaped Matrices  
Foil B - 0.050 mm Molars, all sizes

Art. No.	Group	Pcs	Size
16 B	Molar	20	L
	Molar	20	M

**40 pcs**

of Shaped Matrices  
Foil A - 0.075 mm Premolars, all sizes

Art. No.	Group	Pcs	Size
17 A	Premolar	20	S
	Premolar	20	XS

**40 pcs**

of Shaped Matrices  
Foil B - 0.050 mm Premolars, all sizes

Art. No.	Group	Pcs	Size
17 B	Premolar	20	S
	Premolar	20	XS



Assortments No. 15, 16 and 17 are available in boxes like the one presented.

## Transparent Polyester Bands

AnGer Polyester Bands are made of 0.036mm, 0.050mm or 0.075mm thick polyester foil. That makes it easier to fit them into the interdental spaces. Offered in 3 sizes – 6, 8 and 10mm wide, each 15m long. Choose the most comfortable size depending on the work done! Packed in a tooth-shaped dispenser. The packaging is both pleasant-looking and functional. Just slide the tape out with your thumb for the desired length and use the built-in serrated blade to cut the band. It is also environmentally friendly as you can easily refill it with a new band.

15 m

### Polyester Band in tooth-shaped box, easy to refill

Art. No.	Width	Thickness
1141	6mm	0.036mm
1142	8mm	0.036mm
1143	10mm	0.036mm
1144	6mm	0.050mm
1145	8mm	0.050mm
1146	10mm	0.050mm
1147	6mm	0.075mm
1148	8mm	0.075mm
1149	10mm	0.075mm



15 m

### Polyester Band refills

Art. No.	Width	Thickness
1141-Refill	6mm	0.036mm
1142-Refill	8mm	0.036mm
1143-Refill	10mm	0.036mm
1144-Refill	6mm	0.050mm
1145-Refil	8mm	0.050mm
1146-Refill	10mm	0.050mm
1147-Refill	6mm	0.075mm
1148-Refill	8mm	0.075mm
1149-Refill	10mm	0.075mm



15 m

### Polyester Band in cardboard box

Art. No.	Width	Thickness
1151	6 mm	0.036 mm
1152	8 mm	0.036 mm
1153	10 mm	0.036 mm
1154	6 mm	0.050 mm
1155	8 mm	0.050 mm
1156	10 mm	0.050 mm
1157	6 mm	0.075 mm
1158	8 mm	0.075 mm
1159	10 mm	0.075 mm





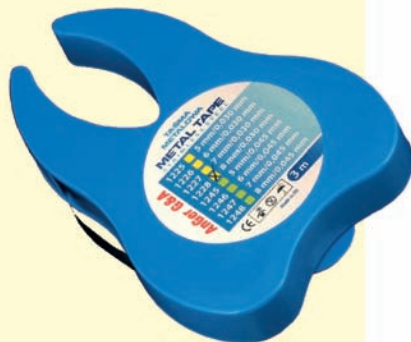
## Metal Matrix Bands

AnGer Metal Matrix Bands are recommended when chemical treatment is applied during the restoration process. The use of appropriate retainer allows for achieving desired tension of the band. However, it is important to remember that if the treated tooth's lateral walls are thin, the pressure of band upon the tooth must not be greater than the specified marginal values. That prevents tooth walls from breaking. With AnGer metal bands it is possible to separate securely the treated tooth from the adjacent ones. The bands help to proceed with tooth restoration without any undesired influence on the adjacent teeth. By large defects it is better to use the shaped polyester matrices or the self-locking matrices.

**3 m**

### Matrix Band in tooth-shaped box, easy to refill

Art. No.	Width	Thickness
1225	5mm	0.030mm
1226	6mm	0.030mm
1227	7mm	0.030mm
1228	8mm	0.030mm
1245	5mm	0.045mm
1246	6mm	0.045mm
1247	7mm	0.045mm
1248	8mm	0.045mm



**3 m**

### Matrix Band refills

Art. No.	Width	Thickness
1225-Refill	5mm	0.030mm
1226-Refill	6mm	0.030mm
1227-Refill	7mm	0.030mm
1228-Refill	8mm	0.030mm
1245-Refill	5mm	0.045mm
1246-Refill	6mm	0.045mm
1247-Refill	7mm	0.045mm
1248-Refill	8mm	0.045mm



**3 m**

### Matrix Band in cardboard box

Art. No.	Width	Thickness
1235	5mm	0.030mm
1236	6mm	0.030mm
1237	7mm	0.030mm
1238	8mm	0.030mm
1255	5mm	0.045mm
1256	6mm	0.045mm
1257	7mm	0.045mm
1258	8mm	0.045mm



## Light-Conductive Interdental Wedges

1



When the interdental space is tight, and it is difficult to insert a matrix, band, or crown - use AnGer interdental wedges. AnGer wedges temporarily separate teeth and help to place the matrix round the treated tooth. As soon as the side of the matrix reaches the contact point, slowly remove the wedge placing matrix the desired way.

2



Once the shaped polyester matrix, the self-locking matrix, polyester band or crown is on the tooth – apply AnGer light-conductive wedge to press and secure the matrix to the tooth to be filled. Four sizes of wedges are offered to give better choice.

3



The main purpose for AnGer wedges is to lead the polymerization light evenly throughout the entire filling and to prevent uneven shrinkage and strains in restoration material.

100  
pcs

of Transparent Wedges  
one size

Art. No.	Size	Type
20-1091	L	thick/large
20-1092	M	medium
20-1093	S	slim
20-1094	XS	ultra slim



200  
pcs

of Transparent Wedges  
all sizes

Art. No.	Size	Pieces	Type
20	L	50	thick/large
	M	50	medium
	S	50	slim
	XS	50	ultra slim



## Soft Interdental Wedges

AnGer soft and elastic interdental wedges are better choice to the standard wooden wedges:

- they do not absorb saliva, blood or other fluids which might irritate the gums
- are easy to insert in between the teeth
- are elastic & soft, yet stiff
- instantly adapt to the tooth shape
- do not stain the filling
- do not cause undesired tensions
- do not cause discomfort or pain
- easy to pull out.

The soft elastic wedges are available in four sizes which give choice to pick the best size to fit in between the teeth. The sizes are colour-coded.

**100  
pcs**

**of Soft Wedges  
one size**

Art. No.	Size	Type
21-1081	L	thick/large
21-1082	M	medium
21-1083	S	slim
21-1084	XS	ultra slim



**200  
pcs**

**of Soft Wedges  
all sizes**

Art. No.	Size	Pieces	Type
21	L	50	thick/large
	M	50	medium
	S	50	slim
	XS	50	ultra slim



## Tooth-Shaped Clocks

Our dental gadgets will decorate every surgery as well as a waiting room. Available in a variety of colours. May be also a great gift for the youngest patients.

**ALL THE GADGETS MAY BE DELIVERED WITH YOUR LOGO OR COMPANY DETAILS!**

### Art. 2001

Tooth-Shaped Wall Clock made of rigid foil  
Dimensions: 23 x 33cm

Art. 2001 is also available as a self-assembly kit to decrease the shipping costs!

Art. 2001-1 - White

Art. 2001-2 - Red

Art. 2001-3 - Blue

Art. 2001-32 - Sapphire

Art. 2001-5 - Yellow



### Art. 2021

Tooth-Shaped Wall Clock  
made of hard plastic  
Dimensions: 22 x 28cm

Art. 2021-1 - White

Art. 2021-2 - Red

Art. 2021-21 - Orange

Art. 2021-22 - Pink

Art. 2021-3 - Blue

Art. 2021-31 - Navy blue

Art. 2021-32 - Sapphire

Art. 2021-4 - Green

Art. 2021-5 - Yellow

Art. 2021-6 - Black



### Art. 2011

Tooth-Shaped Desk Clock  
made of hard plastic  
Dimensions: 13 x 16cm  
Colours available as above.



Sample colours for wall clocks Art. 2021 and desk clocks Art. 2011. Other colours available.

Hard plastic clocks (Art. 2021 and 2011) may be delivered according to your own shape design by large order quantity.

## Tooth-Shaped Mirrors & Key Rings



**Art. 3004** Tooth-Shaped Mirror with Handle  
Dimensions: 14 x 27cm  
Colours available as in Art. 2021



**Art. 3002** Tooth-Shaped Desk Mirror –  
fold-up stand  
Dimensions: 14 x 16cm



**Art. 3001** Tooth-Shaped Mirror  
Dimensions: 13 x 16cm



**Art. 3003** Tooth-Shaped Mirror –  
Dimensions: 6 x 8cm



**Art. 3005** Tooth-Shaped Wall Mirror  
Dimensions: 22 x 28cm



**Art. 4011** Tooth-Shaped Key Ring  
Dimensions: 40 x 50mm



**Art. 3006** Tooth-Shaped Wall Mirror  
Dimensions: 27.5 x 35cm



**Art. 4012** Tooth-Shaped Key Ring  
Dimensions: 35 x 28mm  
Both sizes of the key rings are available  
in a wide variety of colours.







## Our distributors worldwide

Algeria  
Argentina  
Armenia  
Austria  
Belgium  
Bosnia & Herzegovina  
Bulgaria  
Croatia  
Czech Republic  
Denmark  
Egypt  
Estonia  
Ecuador  
France  
Germany  
Greece  
Hungary  
Indonesia  
Iran  
Israel  
Italy  
Japan  
Jordan



Kazakhstan  
Lebanon  
Lithuania  
Macedonia  
Morocco  
Netherlands  
Poland  
Portugal  
Republic of South Africa  
Romania  
Saudi Arabia  
Senegal  
Serbia  
Slovakia  
Spain  
Syria  
Tunisia  
Turkey  
Ukraine  
United Arab Emirates  
United Kingdom  
USA (California)



**AnGer G&A Dental Manufacturing Enterprise**

tel. +48 12 626 53 55, fax +48 12 626 53 60

[www.anger.com.pl](http://www.anger.com.pl)

[export@anger.com.pl](mailto:export@anger.com.pl)

[exportdent@gmail.com](mailto:exportdent@gmail.com)